



Stockwell Park Walk, Brixton, SW9

2 bedroom flat - purpose built for sale

£375,000

Leasehold

Property Details

This characterful two double bedroom first-floor apartment is set within an Art Deco gated community and features a shared garden and a private balcony accessed via the second bedroom. The flat has a thoughtfully designed layout, with a separate reception room and kitchen providing both comfort and practicality. The reception room is generously proportioned, filled with natural light from large windows, and offers a bright, inviting space for relaxing or entertaining. The separate kitchen is fitted with cream cabinetry, a classic butler sink, ample worktop space, and plentiful floor-to-ceiling storage. Both bedrooms are doubles and positioned on opposing sides of the apartment for privacy. The principal bedroom overlooks the communal gardens and benefits from built-in storage and space for additional furnishings. The second bedroom is bright, versatile, and opens onto the private balcony. The centrally located bathroom features a full-sized bath with overhead shower, basin, and WC. Residents also enjoy access to a well-maintained shared garden, providing additional outdoor space.

Features

- Two double bedrooms
- Art Deco gated building
- Balcony
- Attractive shared garden
- Separate kitchen and reception
- Bright and airy
- Local amenities of central Brixton
- Victoria line in five minutes
- Walking distance to Northern line & Clapham High Street
- Chain-free

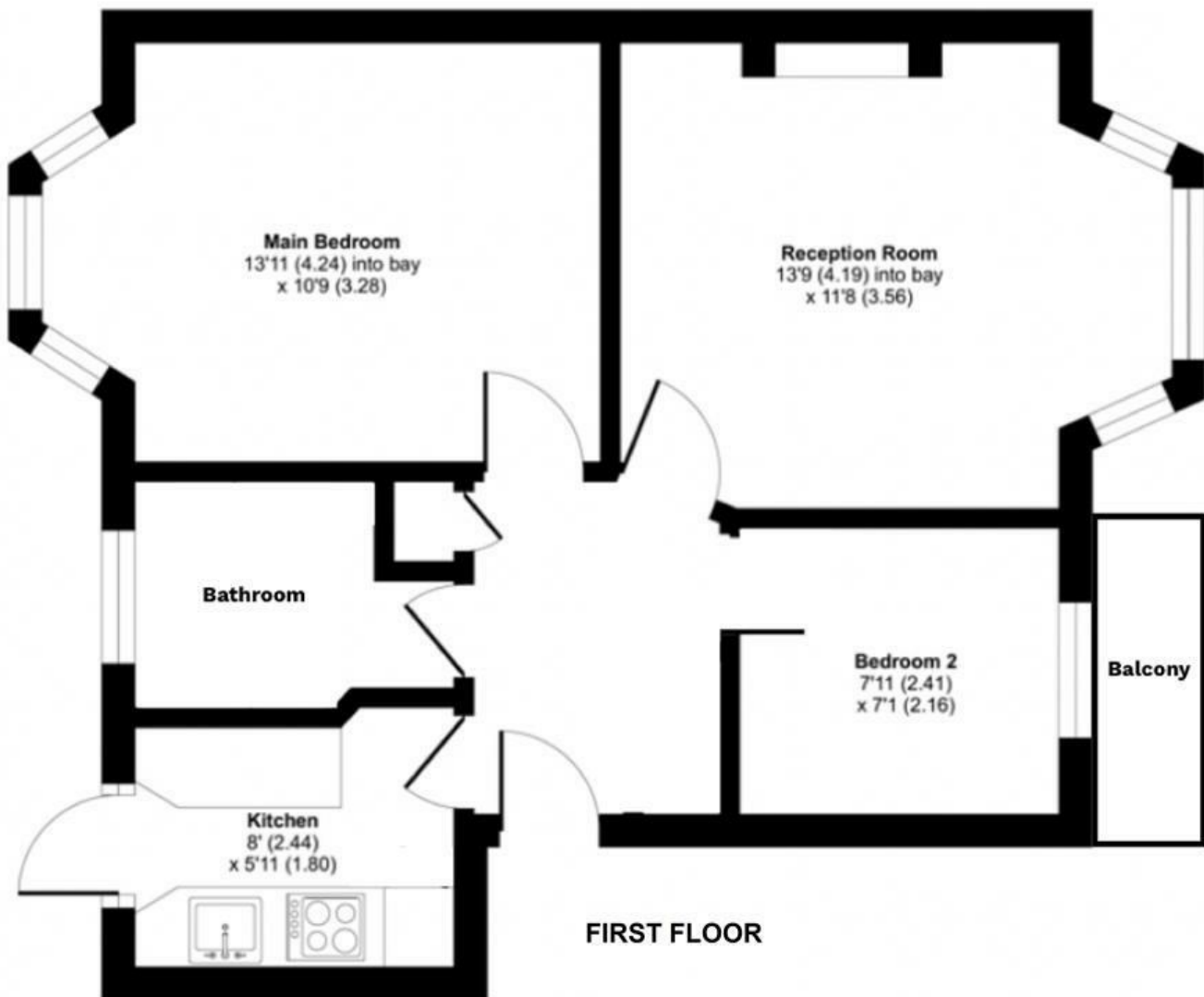
Council tax band B EPC rating C (74)



Stockwell Park Walk, Brixton, SW9

Stockwell Park Walk, SW9 2 Bedroom Flat

APPROXIMATE GROSS INTERNAL AREA: **508 SQ FT / 47.1 SQ M**



While we try our very best, floor plans are produced as a guide only and we take no responsibility for the precise accuracy with which any property is represented.

Stockwell Park Walk, Brixton, SW9

